
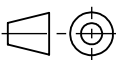
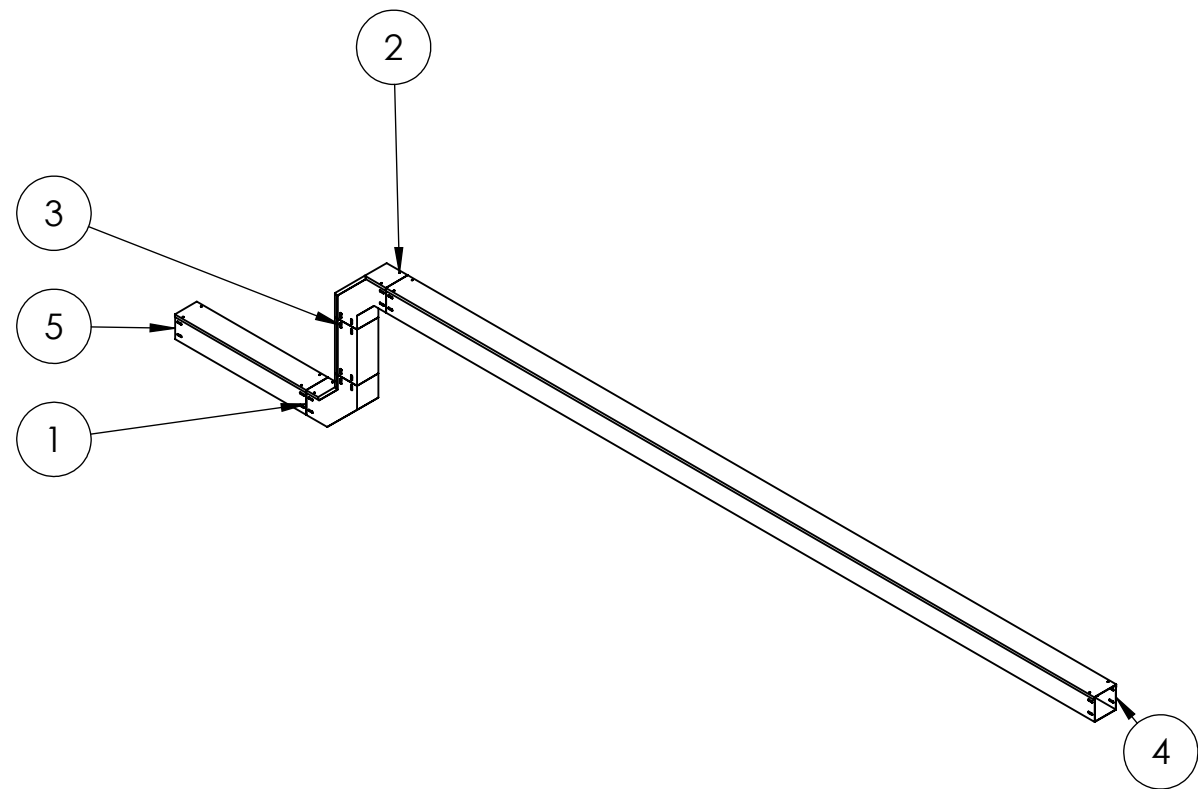


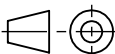


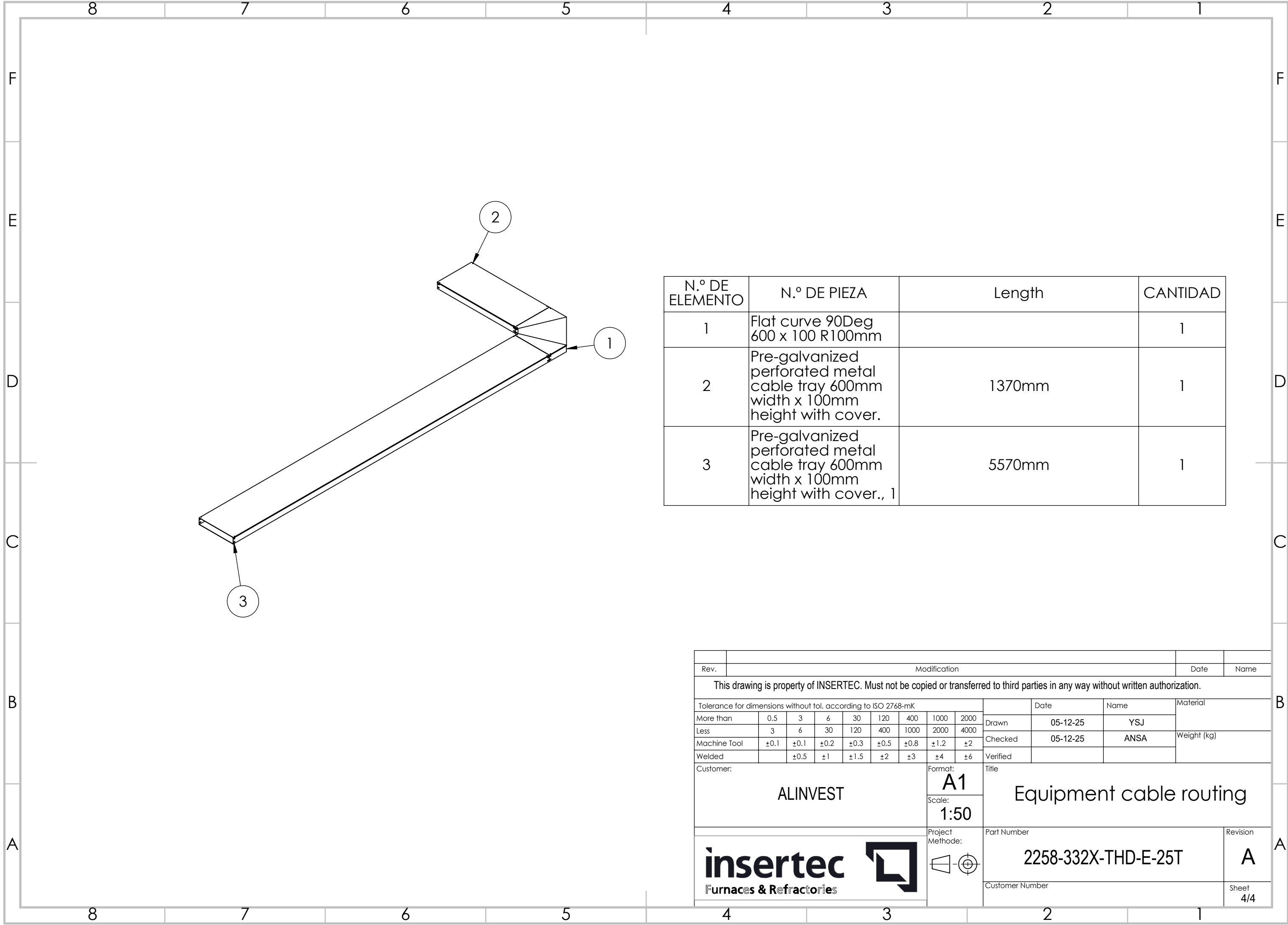
N.º DE ELEMENTO	N.º DE PIEZA	Length	CANTIDAD
1	Cable Duct Flat Bend 90Deg x 0.250B x 0.10 x 0.10		1
2	Cable Duct 0.10 x 0.10, 2	4100mm	1
3	Cable Duct 0.10 x 0.10, 3	850mm	1

Rev.	Modification								Date	Name		
This drawing is property of INSERTEC. Must not be copied or transferred to third parties in any way without written authorization.												
Tolerance for dimensions without tol. according to ISO 2768-mK										Date	Name	Material
More than	0.5	3	6	30	120	400	1000	2000	Drawn	05-12-25	YSJ	Weight (kg)
Less	3	6	30	120	400	1000	2000	4000				
Machine Tool	±0.1	±0.1	±0.2	±0.3	±0.5	±0.8	±1.2	±2	Checked	05-12-25	ANSA	
Welded		±0.5	±1	±1.5	±2	±3	±4	±6	Verified			
Customer:							Format:		Title			
ALINVEST							A1		Equipment cable routing			
							Scale:					
							1:25					
 insertec Furnaces & Refractories							Project		Part Number		Revision	
							Methode:		2258-332X-THD-E-25T		A	
												
									Customer Number		Sheet	
									2/4			


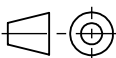


N.º DE ELEMENTO	N.º DE PIEZA	Length	CANTIDAD
1	Vertical concave curve 90Deg 100 x 100 R100mm		1
2	Vertical convex curve 90Deg 100 x 100 R100mm		1
3	Cable Duct 0.10 x 0.10, 1	227mm	1
4	Cable Duct 0.10 x 0.10, 4	3313.5mm	1
5	Cable Duct 0.10 x 0.10, 5	613.5mm	1

Rev.	Modification								Date	Name			
This drawing is property of INSERTEC. Must not be copied or transferred to third parties in any way without written authorization.													
Tolerance for dimensions without tol. according to ISO 2768-mK										Date	Name	Material	
More than	0.5	3	6	30	120	400	1000	2000	Drawn	05-12-25	YSJ		
Less	3	6	30	120	400	1000	2000	4000	Checked	05-12-25	ANSA	Weight (kg)	
Machine Tool	±0.1	±0.1	±0.2	±0.3	±0.5	±0.8	±1.2	±2					
Welded		±0.5	±1	±1.5	±2	±3	±4	±6	Verified				
Customer:							Format:		Title				
ALINVEST							A1		Equipment cable routing				
							Scale:						
							1:50						
<div></div>							Project Methode:		Part Number				Revision
									2258-332X-THD-E-25T				A
									Customer Number				



N.º DE ELEMENTO	N.º DE PIEZA	Length	CANTIDAD
1	Flat curve 90Deg 600 x 100 R100mm		1
2	Pre-galvanized perforated metal cable tray 600mm width x 100mm height with cover.	1370mm	1
3	Pre-galvanized perforated metal cable tray 600mm width x 100mm height with cover., 1	5570mm	1

									Date	Name		
Rev.	Modification											
This drawing is property of INSERTEC. Must not be copied or transferred to third parties in any way without written authorization.												
Tolerance for dimensions without tol. according to ISO 2768-mK										Date	Name	Material
More than	0.5	3	6	30	120	400	1000	2000	Drawn	05-12-25	YSJ	Weight (kg)
Less	3	6	30	120	400	1000	2000	4000				
Machine Tool	±0.1	±0.1	±0.2	±0.3	±0.5	±0.8	±1.2	±2	Checked	05-12-25	ANSA	
Welded		±0.5	±1	±1.5	±2	±3	±4	±6	Verified			
Customer:							Format:		Title			
ALINVEST							A1		Equipment cable routing			
							Scale:					
							1:50					
 Furnaces & Refractories							Project Methode:		Part Number			Revision
									2258-332X-THD-E-25T			A
									Customer Number			Sheet
												4/4